

# Eagle Brewery Wharf, Kingston

Davies White Ltd with The Edible Bus Stop – May 2021





# Eagle Brewery Wharf, Kingston SWOT Discussion & summary

Davies White Ltd with The Edible Bus Stop® – May 2021



## STRENGTHS

what do you most like about the site?

## WEAKNESSES

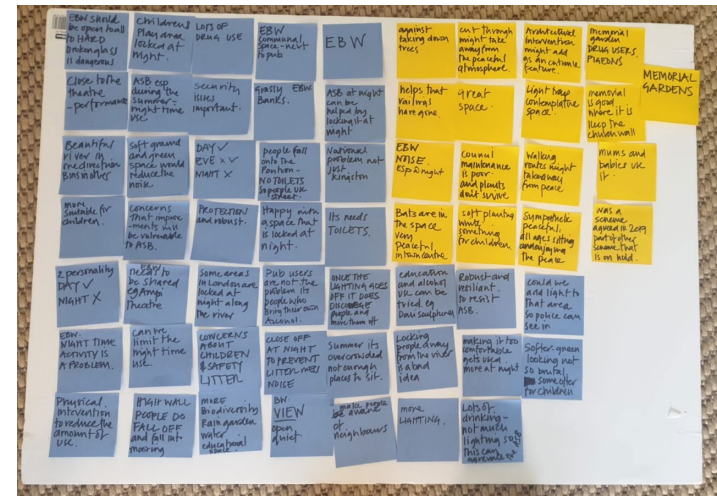
What needs improving?

## OPPORTUNITIES

What do you think would greatly improve the site?

## THREATS

What do you think will be an obstacle?





**Responding  
to heritage**



**Inviting and  
distinctive**



**A place for  
everybody**



**Boundaries**



**A natural  
haven**



**A range of  
experiences**

## Draft Design Principles



**New  
facilities**



**A playful  
place**



**A cultural  
place**



**Maximising  
environmental  
benefits**



**Resilient**









**High  
Street  
Regeneration**



# Eagle Brewery Wharf – Design Principles

Davies White Ltd with The Edible Bus Stop – May 2021

 <b>Responding to heritage</b>	 <b>Inviting and distinctive</b>	 <b>A place for everybody</b>	 <b>Boundaries</b>	 <b>A natural haven</b>	 <b>A range of experiences</b>
<p><b>Reference the Brewery</b></p> <p>links to history of eagle brewery wharf (perhaps panels as in passage from town square to river)</p> <p>The old Well</p>	<p><b>Connection to the river</b></p> <p>create a pocket park/ green space with opportunities for community/ art with more seating (tiered - thinking of Granary Square steps down to canal)</p> <p>Use a common architectural palette.</p> <p>Sound absorption should be considered in design.</p> <p>Making it softer will be a good approach.</p> <p>Flexible space, river view</p> <p>simply relax and enjoy the riverside location</p>	<p><b>an accessible, inclusive multicultural cross generational space</b></p> <p>Increase public seating ++</p> <p>Alternative solution to locking people out of public realm should be found.</p> <p>Make it family friendly</p> <p>Depth and size of the space brings opportunities.</p>	<p><b>Improve public and private boundaries</b></p> <p>Rams Passage is a natural entrance</p> <p>It's a rare open space in a neighbourhood with a great view.</p> <p>Riverside wall is dangerous. People fall off it. Railing should be on it for safety.</p> <p>Mark the route from the river to the ancient market with a playful trail.</p> <p>connects with town centre and riverside but could do better</p>	<p><b>Enhance biodiversity with trees and plants.</b></p> <p>Should be a nice green space with a garden to sit and relax</p> <p>like the idea of blossom trees (inspired by recent announcement by the National Trust!) and a communal fitness/ physical activity space</p> <p>River is the best thing.</p>	<p><b>Events and learning – a flexible events space</b></p> <p>incorporate outdoor learning opportunities</p> <p>Daytime, a wonderful space for potential wellbeing, mental health workshops, health and fitness outdoor classes</p> <p>Ideal space for open air events</p> <p>Silent Disco's in a pavilion or event space along side theatre, pop up markets and workshops</p>

# Eagle Brewery Wharf – Design Principles

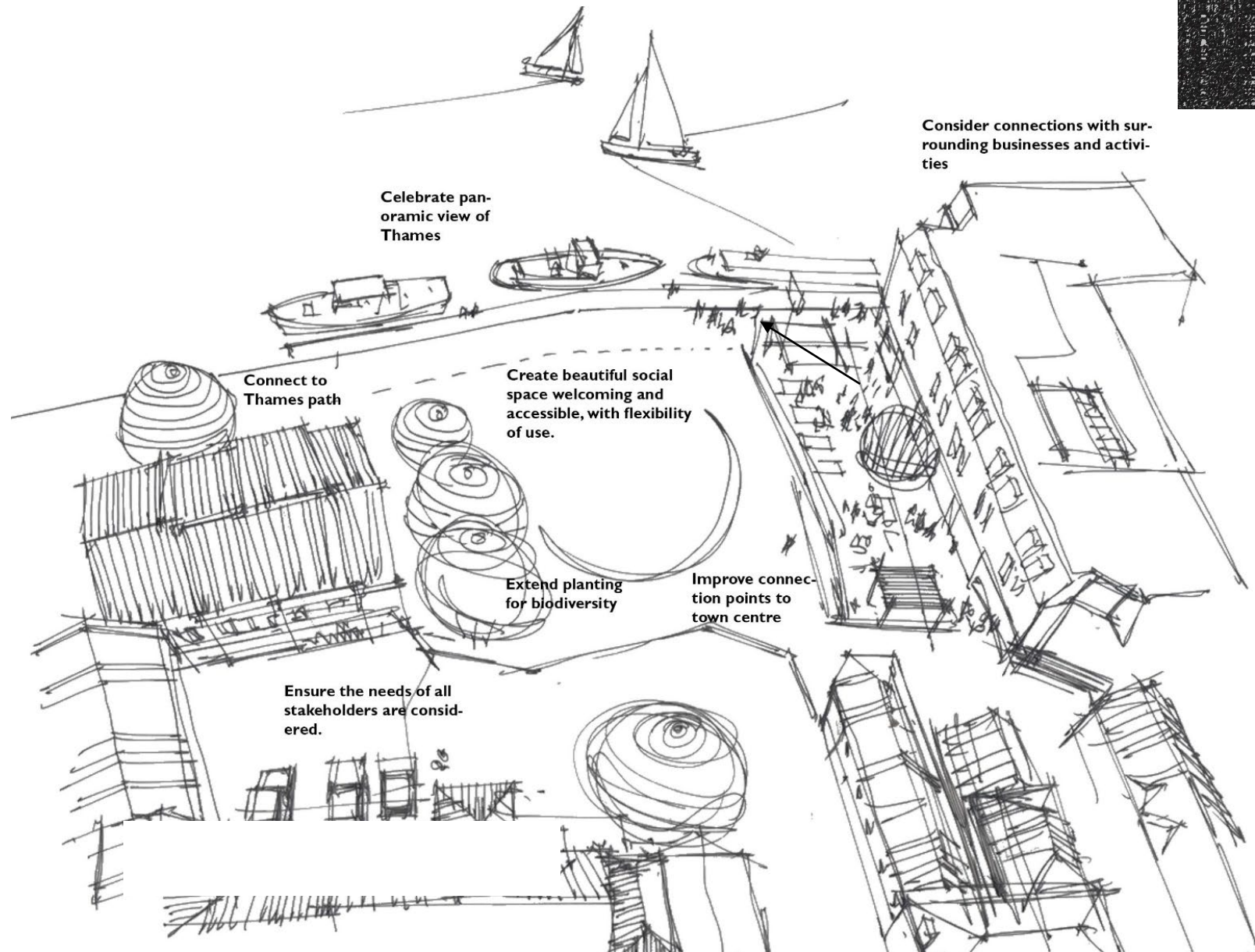
Davies White Ltd with The Edible Bus Stop – May 2021

					
<b>New facilities</b>	<b>A playful place</b>	<b>A cultural place</b>	<b>Maximising environmental benefits</b>	<b>Resilient</b>	<b>High Street Regeneration</b>
<p><b>Connect with existing facilities. Consider new pop facilities</b></p>	<p><b>Create a none prescriptive playful space</b></p>	<p><b>A space for events</b></p>	<p><b>Reconnection with nature</b></p>	<p><b>Sustainable &amp; manageable</b></p>	<p><b>Support local businesses and involve in the creation</b></p>
<p>Café and kiosk needed.</p> <p>Has two great pubs next door</p>	<p>A play space for children ++ ++++</p> <p>A physical intervention like a playground would help reduce the number of users at night</p>	<p>A proper venue for events e.g. boat race, music. Kingston Regatta.</p> <p>Have a proper focus such as a stage, pavilion</p> <p>Theatre performance culture and art can be part of it.</p> <p>Missed an opportunity to have an open area for performance.</p> <p>Put culture at the centre of how we recover from lockdown. Opportunity of a renaissance in town centres.</p> <p>Rose theatre would like to grow opportunities for performances, more theatre, more culture through Kingston town centre.</p> <p>Inc public artwork</p>	<p>Increase opps for biodiversity and education. link to river ecology</p> <p>Create an open pleasant space with planting.</p> <p>Bug Hotels</p> <p>Could it be an educational space for green / blue infrastructure</p>	<p><b>Ownership in community</b></p> <p>green / blue infrastructure</p> <p>More trees, more grass, more plants – create a resilient public riverside pocket park with playful element for all ages (not swings, slides and springy things though).</p>	



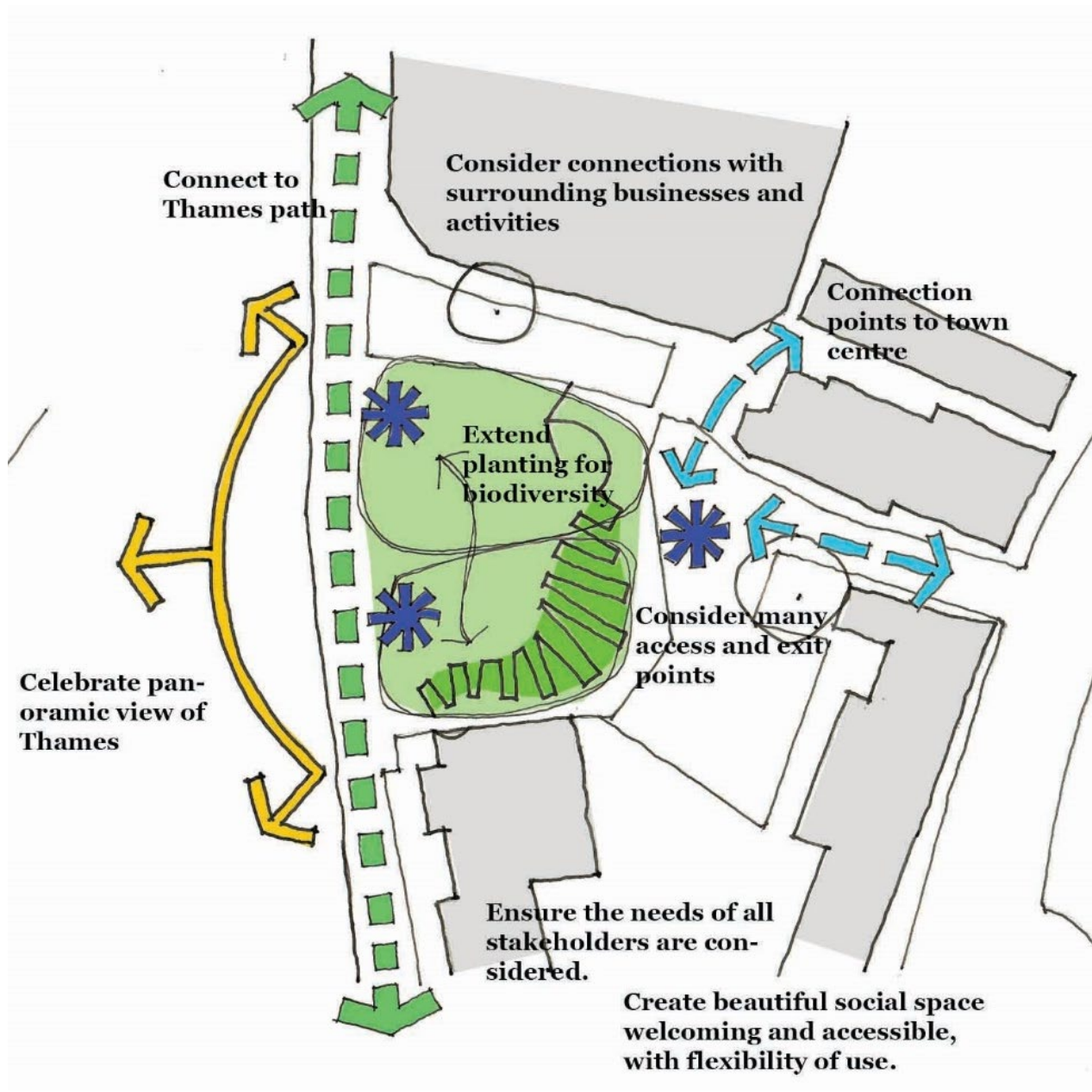
# Eagle Brewery Wharf, Kingston

Davies White Ltd with The Edible Bus Stop – May 2021



# Eagle Brewery Wharf, Kingston

Davies White Ltd with The Edible Bus Stop – May 2021





**A calm oasis  
of green which  
reflects the  
heritage**

**Arriving should feel  
like stepping into  
nature and offer both  
direct and leisurely  
routes**

**Planting which  
delights, surprises  
and supports wildlife**

# Beginning the Concept Designs

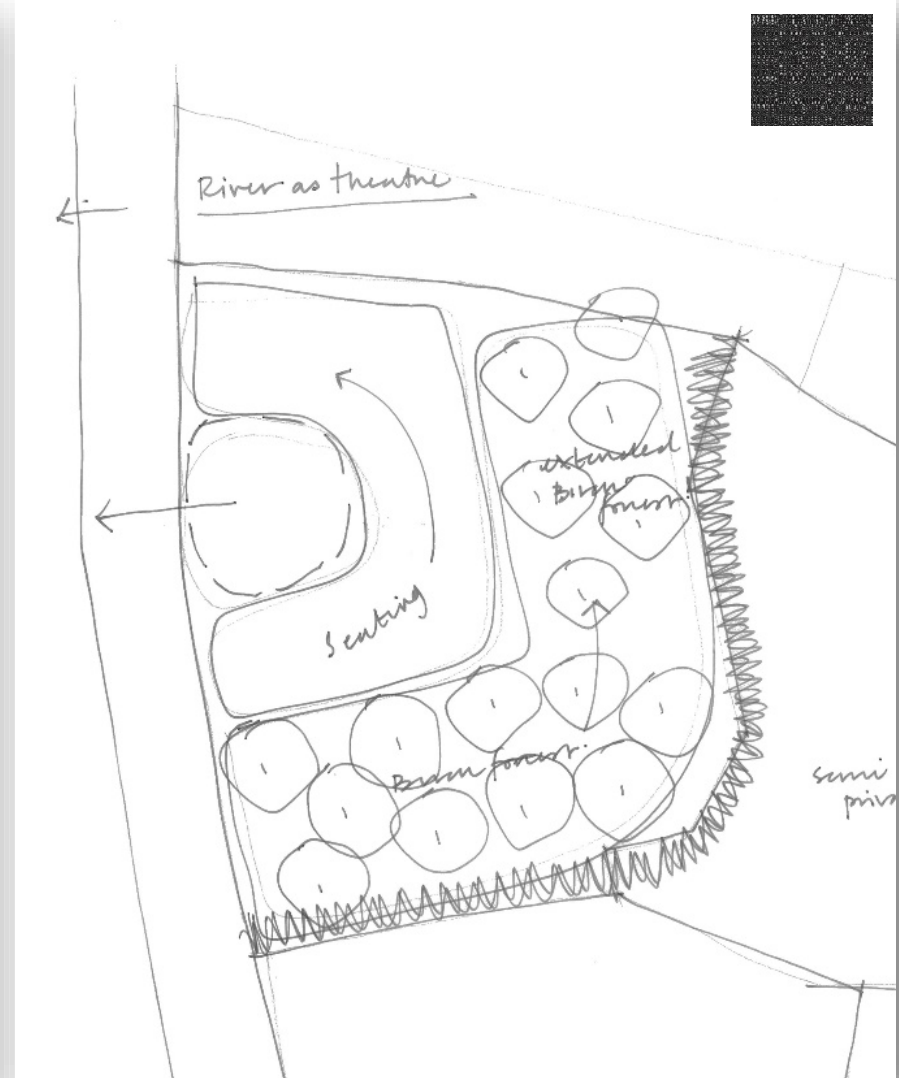
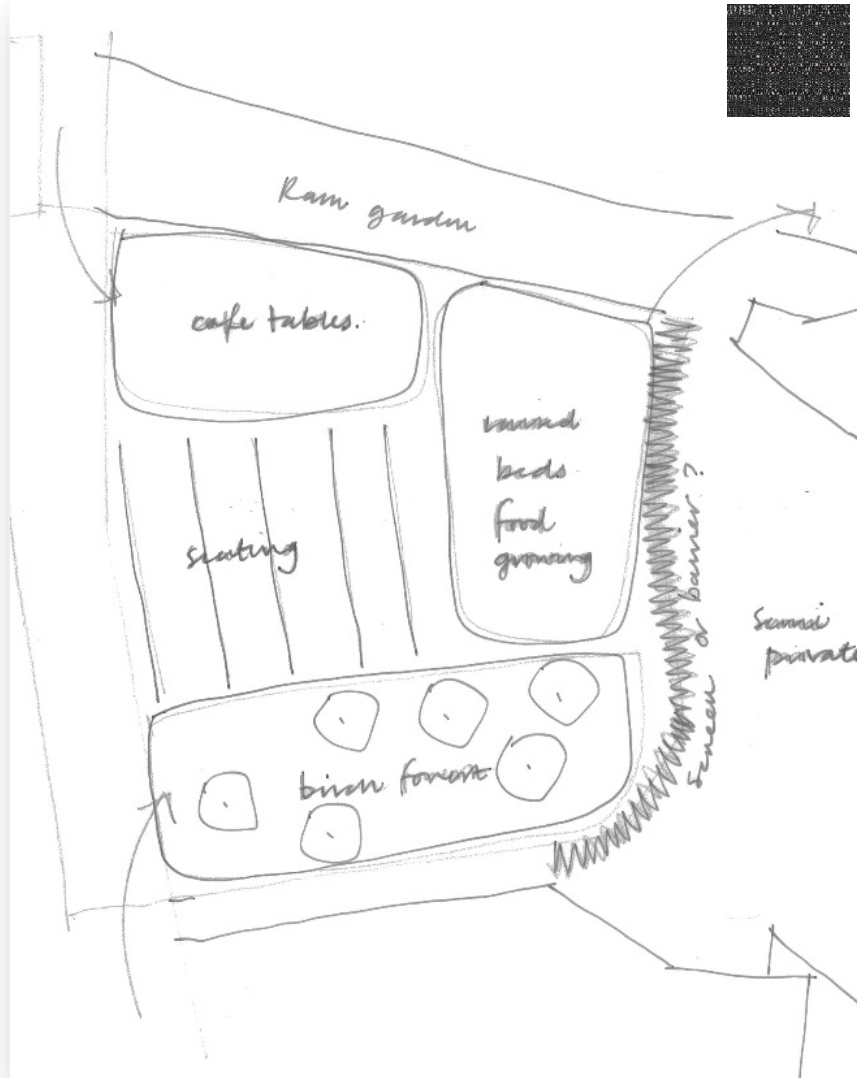
**Focuses on a peaceful  
place of respite with  
appropriate  
elements of play and  
activities**

**Responsibly utilise all  
resources to sustain  
planting, biodiversity,  
experiences and  
education**

**A place that discourages  
anti social behaviour and  
encourages positive cross  
generational use**

# Eagle Brewery Wharf – Concept Design

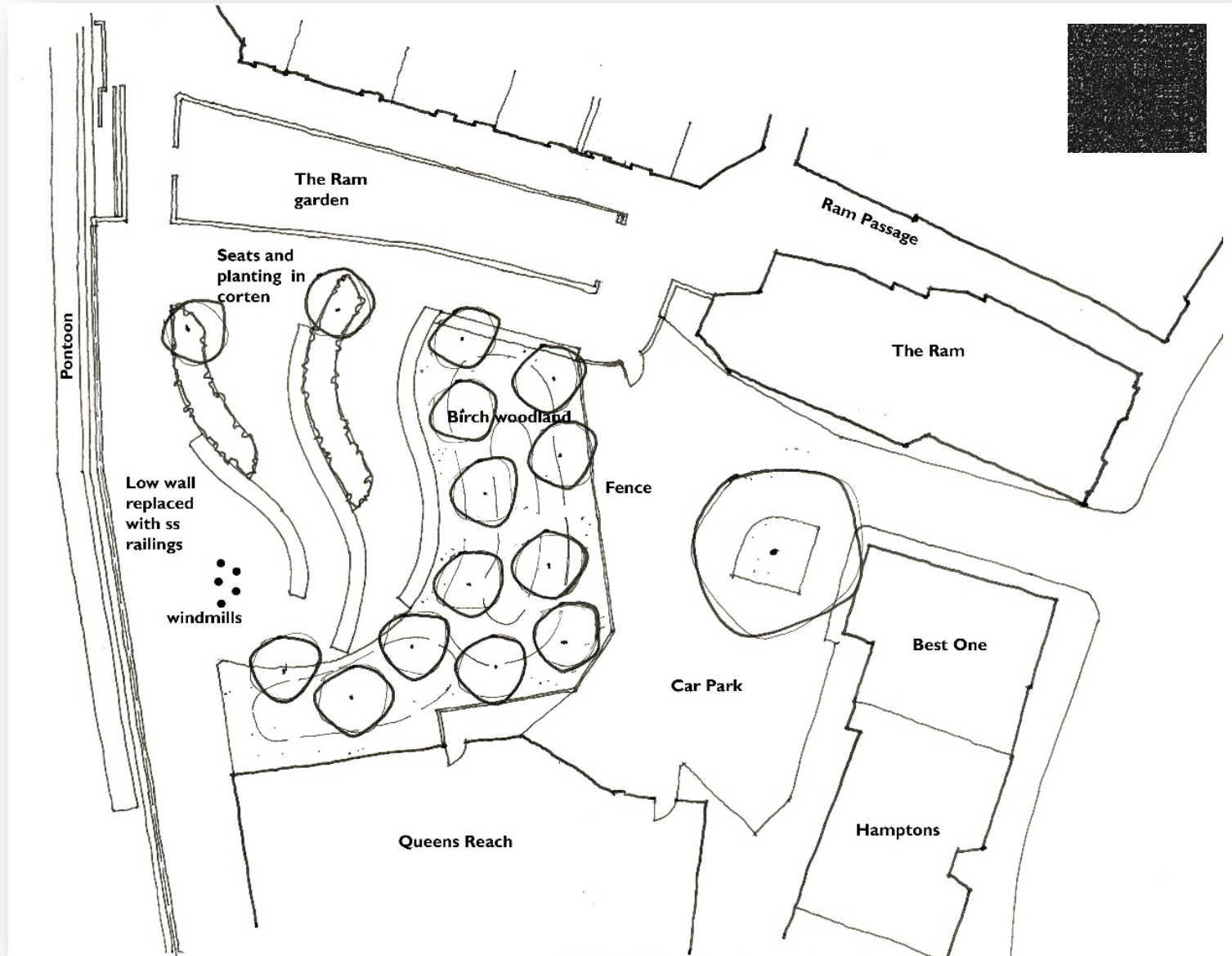
Davies White Ltd with The Edible Bus Stop – May 2021





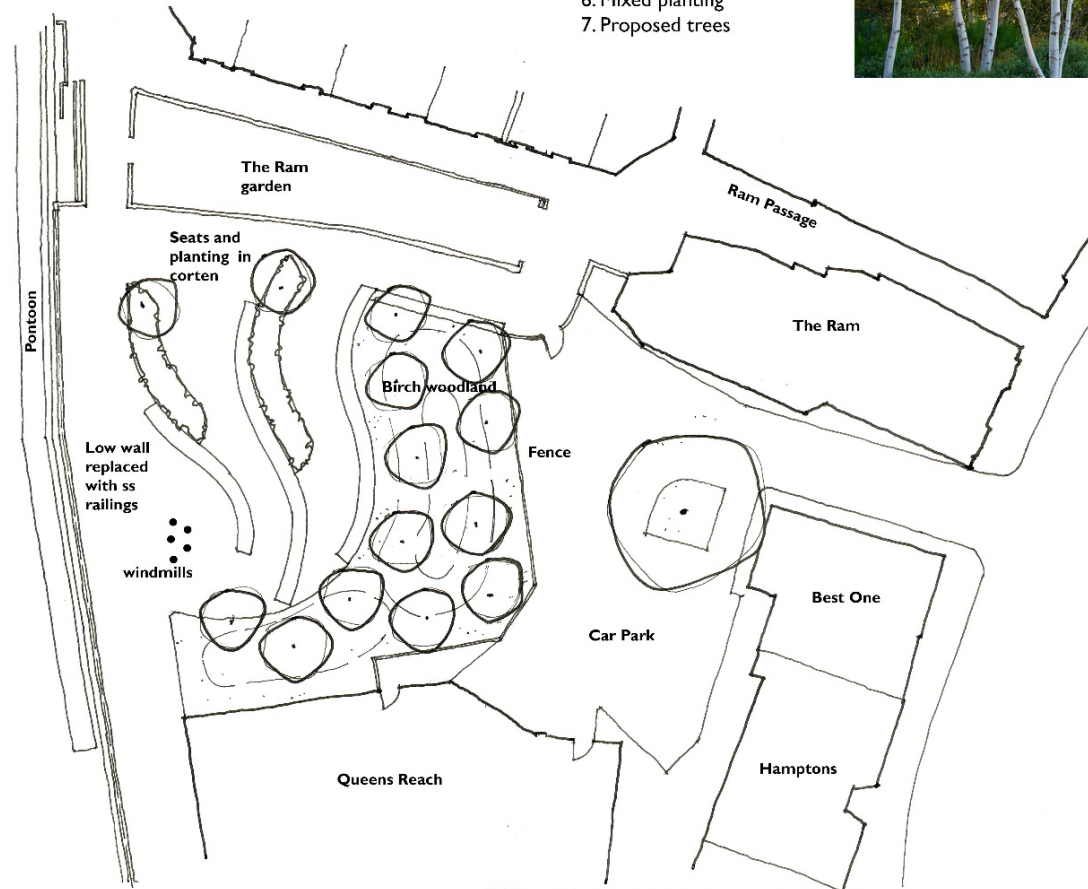
# Eagle Brewery Wharf – Concept Design

Davies White Ltd with The Edible Bus Stop – May 2021

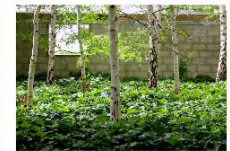
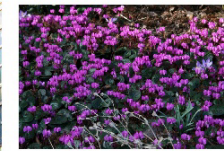
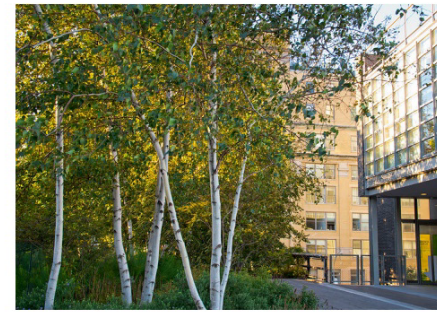


# Eagle Brewery Wharf – Concept Design

Davies White Ltd with The Edible Bus Stop – May 2021



1. Grass
2. Ground cover planting
3. Hard surface type 1
4. Hard surface type 2
5. Hard surface type 3
6. Mixed planting
7. Proposed trees



**Planting concept;**  
Develop the birch woodland with closely planted trees, underplanted with grass or groundcover. Nectar rich planting in raised containers.

**Furniture concept;**  
Long linear benches in keeping with furniture language in Kingston, timber and concrete. Raised planting areas with corten edges.



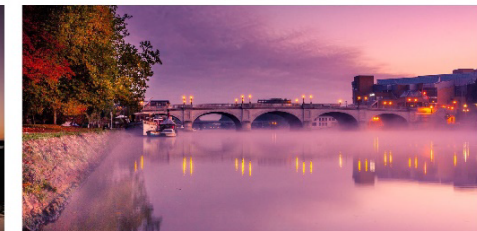
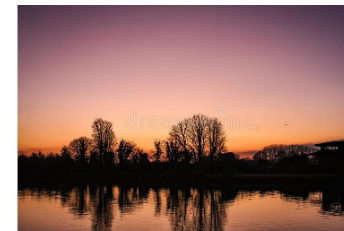
**Hard materials concept;**  
pale stone colours that are used around Kingston. Surfaces to define circulation routes.



**Playful concept;**  
Colourful and playful elements that are not standard play equipment to add a sense of fun, connect with the openness of the space as well as the light wind and weather.



**River as Theatre concept;**  
Seating arranged to face the river and enjoy the open views and drama of the sunsets.





# Eagle Brewery Wharf – Concept Design

Davies White Ltd with The Edible Bus Stop – May 2021



# Eagle Brewery Wharf – Concept Design

Davies White Ltd with The Edible Bus Stop – May 2021





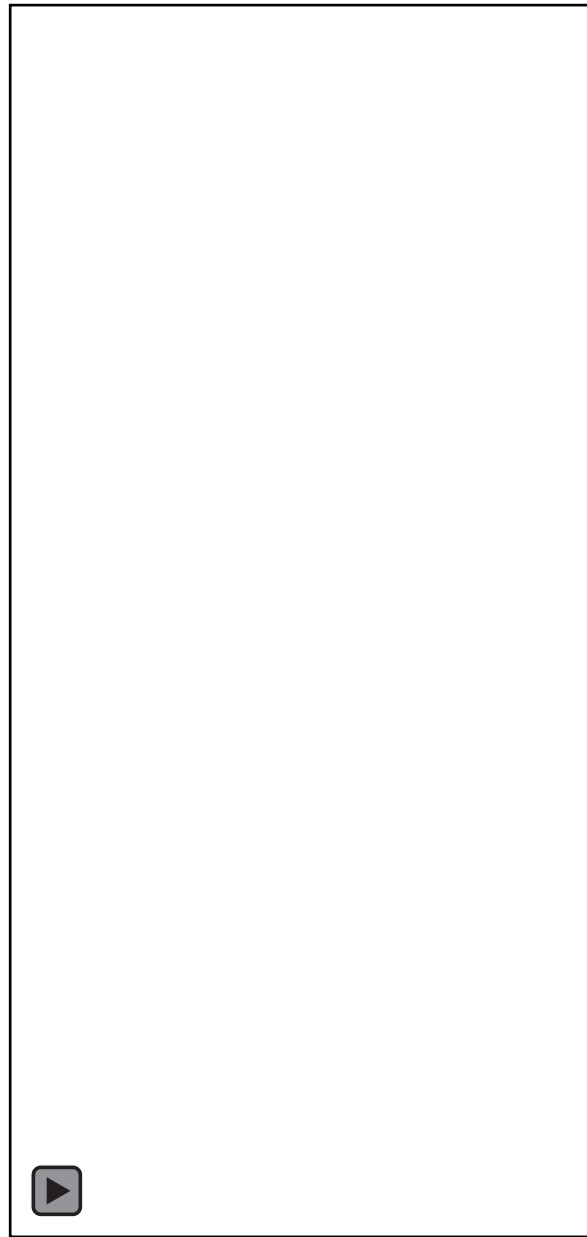
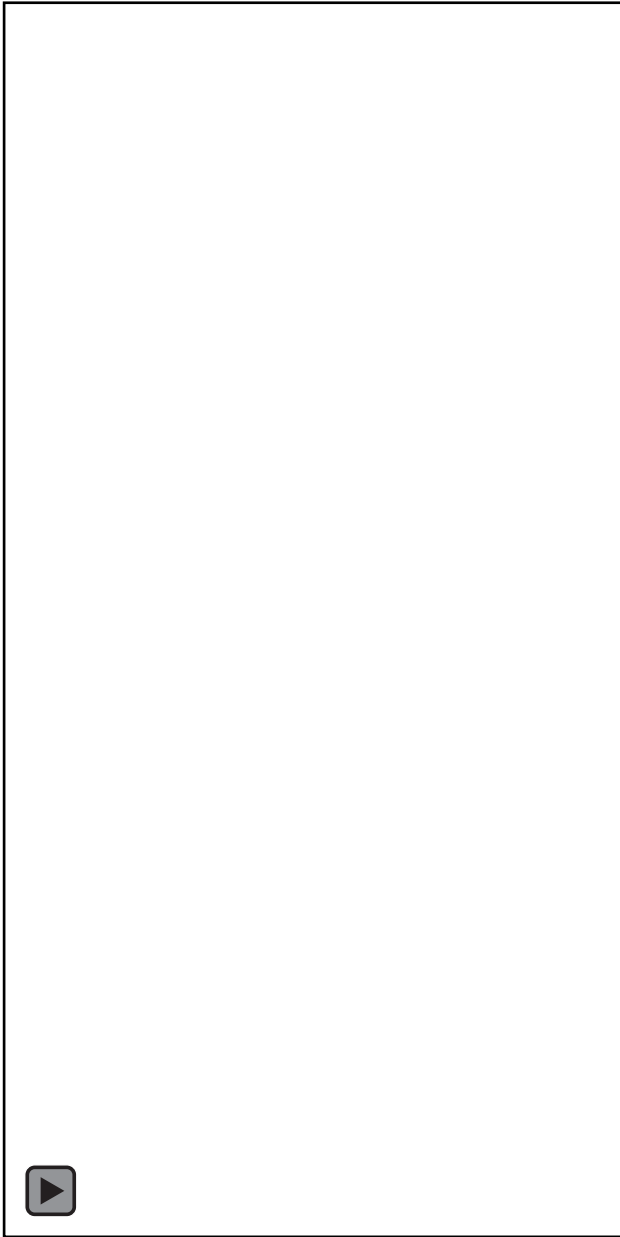
# Memorial Gardens, Kingston

Davies White Ltd with The Edible Bus Stop – May 2021



# Memorial Gardens, Kingston

Davies White Ltd with The Edible Bus Stop – May 2021



# Memorial Gardens, Kingston

## SWOT Discussion & summary



## STRENGTHS

what do you most like about the site?

## WEAKNESSES

## What needs improving?

## OPPORTUNITIES

What do you think would greatly improve the site?

## THREATS

What do you think will be an obstacle?







**Responding  
to heritage**



**Inviting and  
distinctive**



**A place for  
everybody**



**Boundaries**



**A natural  
haven**



**A range of  
experiences**

## Draft Design Principles



**New  
facilities**



**A playful  
place**



**A cultural  
place**



**Maximising  
environmental  
benefits**









**Resilient**



**High  
Street  
Regeneration**

# Memorial Gardens – Design Principles

Davies White Ltd with The Edible Bus Stop –May 2021

 <b>Responding to heritage</b>	 <b>Inviting and distinctive</b>	 <b>A place for everybody</b>	 <b>Boundaries</b>	 <b>A natural haven</b>	 <b>A range of experiences</b>
<p><b>Respect the war memorial and celebrate the heritage of the site</b></p> <p>Open space with meaning and heritage.</p> <p>Remember its importance as a memorial.</p> <p>Reference the heritage and history</p> <p>Capitalise on the history of Kingston and celebrate it</p>	<p><b>It is a light trap and a contemplative space</b></p> <p>Re landscaping the site would be brilliant. Like the idea of cutting through</p> <p>Please turn this place into an Alice in Wonderland space. Mirrors and lighting sculptures and sounds. Bands ect..</p> <p>Opening up the cloisters from the MG will give reason for it to used</p> <p>Definitely should open up through access (and cloisters) from Eden Walk through the Garden.</p>	<p><b>Create a sympathetic peaceful space. A space for parents and children</b></p> <p>Great place to take your dog for a walk or let your children burn off some energy when shopping</p> <p>A calm space in centre of town, good spot for lunch, to read a book</p> <p>Somewhere for mums and babies.</p>	<p><b>Open up the cloisters, remove some railings.</b></p> <p>Cloisters has improved in past 18 months. Helps that the railings have been taken down. Cut through from Boots to create an access path</p> <p>Space was improved when railing at the front were removed. Improving - access/ connection to adjoining space. I didn't know it existed until recently, just happened to come across it thanks to a new puppy!</p> <p>Definitely open up the wall to connect with Eden walk and create a footpath through the garden to the Memorial Square</p> <p>Maybe remove all the railings along the cloisters. Now the main fence along the War Memorial is garden there is no need to keep this part secure.</p>	<p><b>A place to reconnect with people place and nature.</b></p> <p>That there is a public green space within the town centre.</p> <p>It is one of the few green spaces in the town centre</p> <p>One of the only homes in the town centre for nature</p> <p>Tranquil space</p>	<p><b>Variety and flexibility. Retain the openness</b></p> <p>Mums and babies use it</p> <p>Pop up 'pods' during the day</p>

# Memorial Gardens – Design Principles

Davies White Ltd with The Edible Bus Stop – May 2021



## New facilities

**Church Garden**  
Pop up café.  
Performance space?

Been a wonderful place to eat lunch during the COVID-19 restrictions

Could have a bandstand or performance space.

Café and catering could be included.



## A playful place

**Encourage positive use, maybe natural style children's play opps**

incorporate water playfully fountains, shallow streams add to serenity of space but also play opportunity

Make the space more playful, a space for families

That will encourage positive use, maybe a natural style children's playground.



## A cultural place

**Respect memories, new and old**

Opportunity to make a to make a calm space in the town centre

Kingston Uni students to be involved

The cloisters would be the perfect place to have something educational on the walls



## Maximising environmental benefits

**Create a living habitat rich environment – enhance biodiversity**

Succulent living green walls, climbing scented gardens

Herbs for wellbeing.

I love the idea of educating and bringing awareness to biodiversity



## Resilient

**Sustainable materials and resilient for the public realm**

**Ownership in community**



## High Street Regeneration

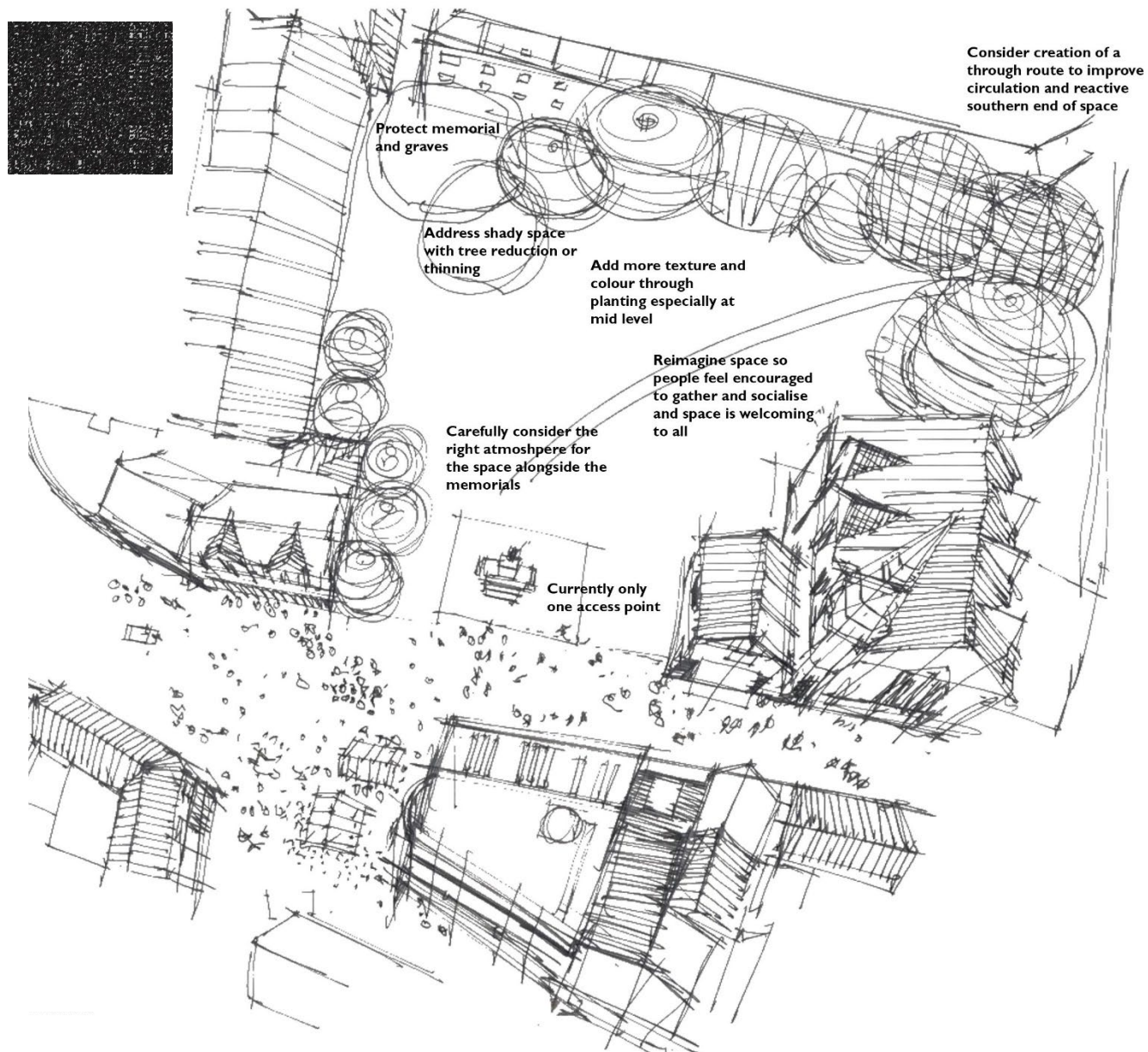
**Engage local businesses in the delivery of the project.**

Thinking about the location as being a 'destination', would it be feasible to have eg monthly craft markets?



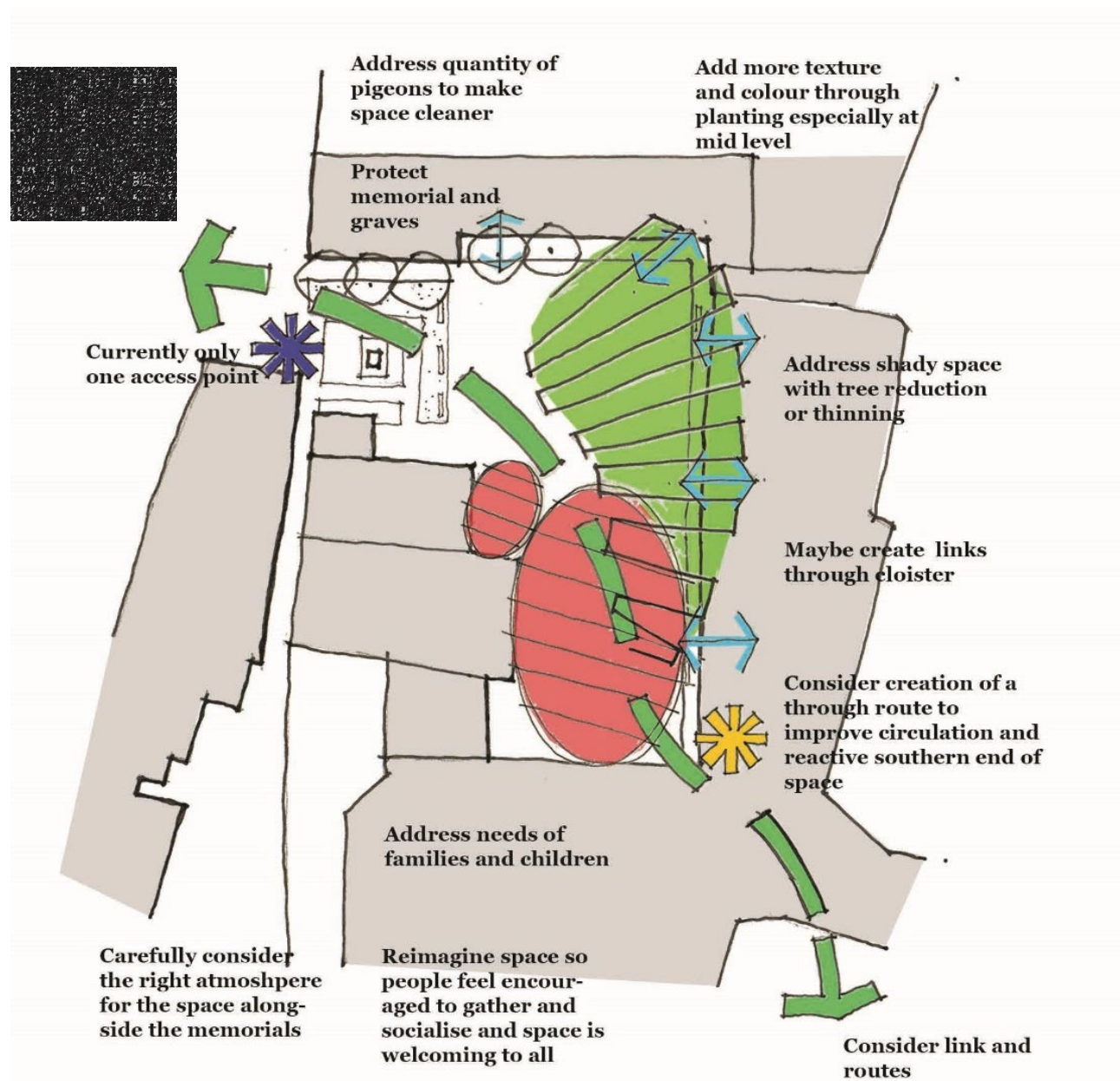
# Memorial Gardens, Kingston

Davies White Ltd with The Edible Bus Stop – May 2021



# Memorial Gardens, Kingston

Davies White Ltd with The Edible Bus Stop – May 2021



**A calm oasis  
of green which  
reflects the  
heritage**

**Arriving should feel  
like stepping into  
nature and offer both  
direct and leisurely  
routes**

**Planting which  
delights, surprises  
and supports wildlife**

# Beginning the Concept Designs

**Focuses on a peaceful  
place of respite with  
appropriate  
elements of play and  
activities**

**Responsibly utilise all  
resources to sustain  
planting, biodiversity,  
experiences and  
education**

**A place that discourages  
anti social behaviour and  
encourages positive cross  
generational use**





### A place for everybody

Create a sympathetic peaceful space. A space for parents and children.

Great place to take your dog for a walk or let your children burn off some energy when shopping.

A calm space in centre of town, good spot for bench, to read a book.

Somewhere for mums and babies.



### Inviting and distinctive

It is a light trap and a contemplative space.

Re-landscaping the site would be better. Use the idea of cutting through.

Please turn this area into an office. Vender and space. Mums and babies. Sculpture and benches. Bikes etc.

Opening up the cloisters from the MAC will give room for it to be used.

Definitely should open up through access (and cloisters) from Eden Wall through the Garden.



### Responding to heritage

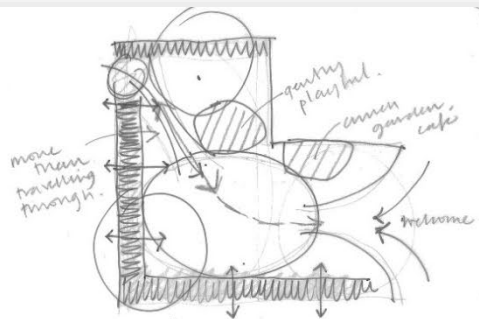
Respect the war memorial and celebrate the heritage of the site.

Open space with mowing and heritage.

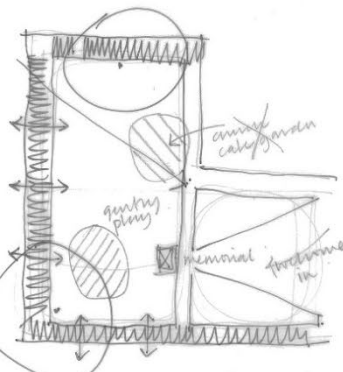
Remember its importance as a memorial.

Reference the heritage and history.

Capitalise on the history of Kingston and celebrate it.



**Diagram 1.**  
Solution needs to allow a through route but not be defined by it.  
A welcome space would help draw people in.  
Consider relocating memorial to help this.



**Diagram 2.**  
A balance of quiet and active spaces. Active spaces need to be gentle enough not to disturb a peaceful atmosphere.  
Sight lines are important.



### A cultural place

Respect memories, new and old.

Opportunity to make a to make a city space in the town centre.

Kingston Uni students to be involved.

The cloisters would be the perfect place to have something educational on the walls.



### Maximising environmental benefits

Create a living habitat rich environment – enhance biodiversity.

Successful living green walls, climbing scented gardens.

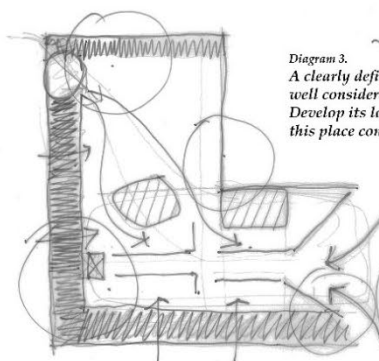
Herbs for well-being.

I love the idea of educating and bringing awareness to biodiversity.



### Resilient

Sustainable materials and resilient for the public realm.



**Diagram 3.**  
A clearly defined layout make the space feels well considered and relaxing.  
Develop its local distinctiveness, what makes this place connected to its location?



### A range of experiences

Variety and flexibility. Retain the openness.

Mums and babies use it.

Pop up 'banks' during the day.



### Boundaries

Open up the cloisters, remove some railings.

Children that represent the past. Let them be. Let the things have been taken down. Let them be taken down. Let them be taken down. Let them be taken down.

Space was improved when railings in the front were removed. Removing railings encourages an adjoining space. Let's know if it could be a new way. Let's see if it could be a new way.

Definitely want to be used to connect with the past, and create a new way. Through the garden to the Museum of Square.

Make sense of all the railings using the museum. How the main focus along the main memorial to garden there is no need to keep the past space.



### New facilities

Church Garden Pop up cafe. Performance space?

Been a wonderful place to eat lunch during the COVID-19 restrictions.

Could have a boardland or performance space.

Cafe and catering could be included.



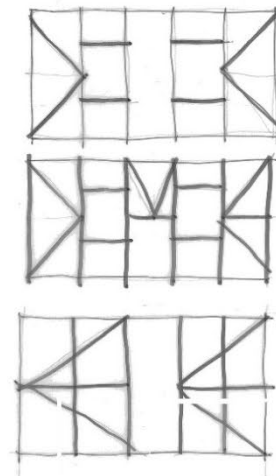
### A playful place

Encourage positive use, maybe natural style children's play apps.

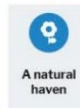
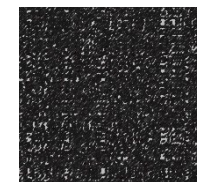
Incorporate water playfully. Bourne, shallow streams add to variety of space but also play opportunity.

Make the space more playful, a space for families.

That will encourage positive use, maybe a natural style children's playground.



**Diagram 4.**  
Layout reflects local patterns of timberwork.



### A natural haven

A place to reconnect with people place and nature.

That there is a public green space within the town centre.

It is one of the few green spaces in the town centre.

Open and blue water.

HC

CE

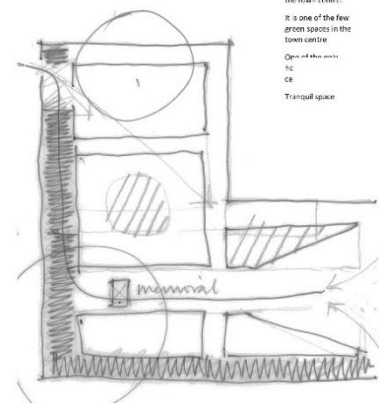
Tranquil space.

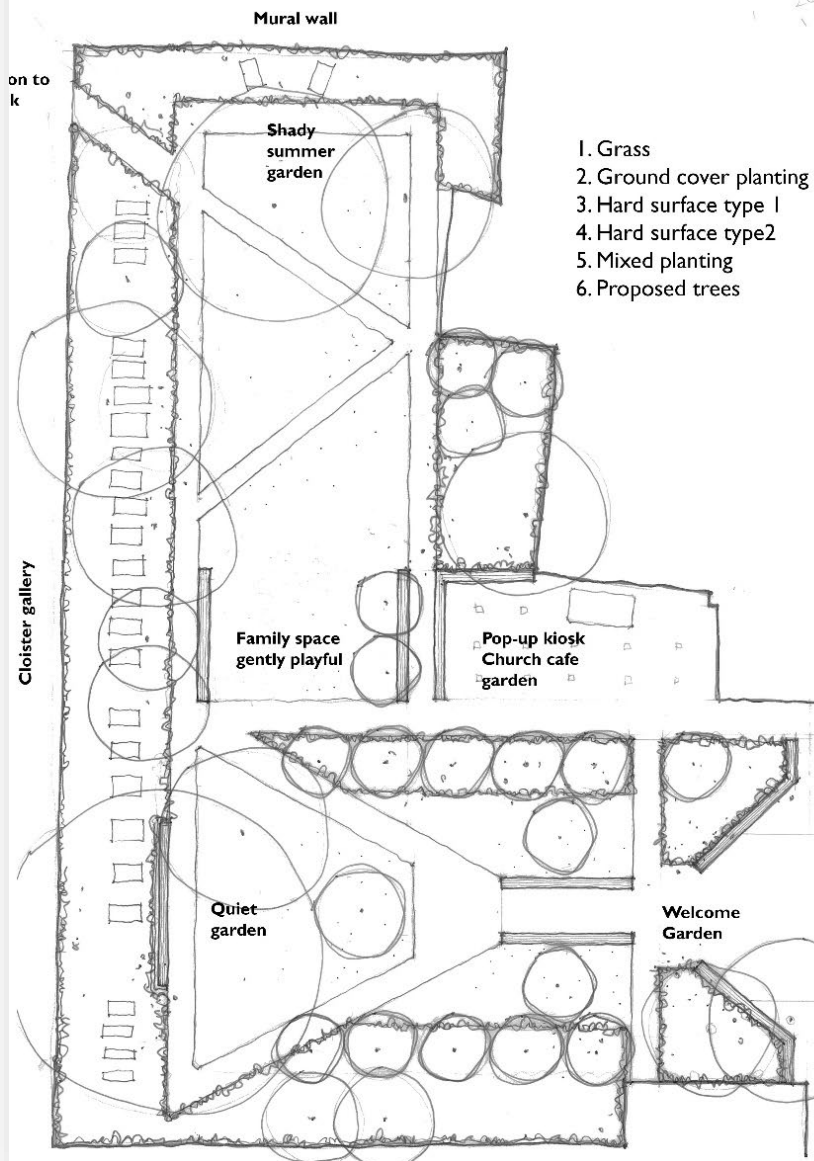


### High Street Regeneration

Engage local businesses in the delivery of the project.

Thinking about the location as being a 'destination', would it be possible to have regular monthly craft markets?





1. Grass
2. Ground cover planting
3. Hard surface type 1
4. Hard surface type 2
5. Mixed planting
6. Proposed trees



**Planting concept;**  
bold single colour mass planting that is a seasonal event.  
Plus nectar rich planting in key locations.



**Hard materials concept;**  
pale stone colours that are used around Kingston.  
Linear stone to act as visual lead.  
Cobbles around memorial to represent crowds paying respect to those remembered.

**Furniture concept;**  
Long linear benches in keeping with furniture language in Kingston, timber and concrete.  
Raised planting areas with corten edges.





# Memorial Gardens – Concept Design

Davies White Ltd with The Edible Bus Stop – May 2021

